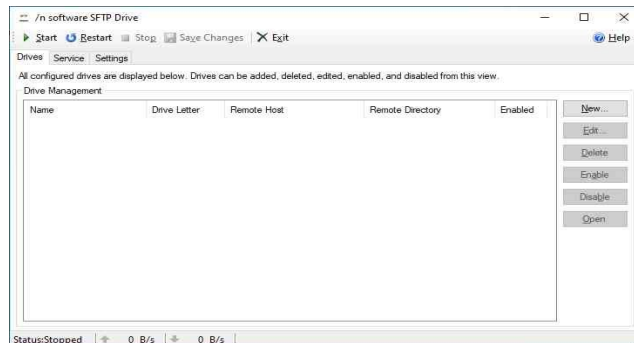


Instruction to map the ELD Shared-folder as local drive on Windows

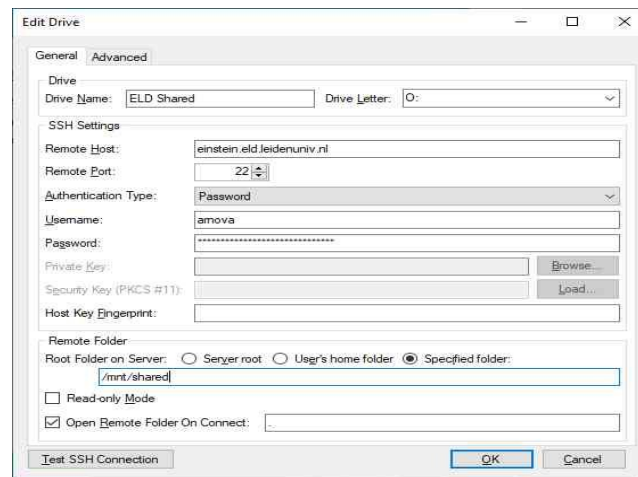
Written by Arno van Amersfoort. Last updated: 11-jul-2024

This instruction for Windows will enable you to map the ELD Shared-folder (containing the Altium, OrCAD, projects, etc. -folders) as a local drive on your computer using the SFTP-protocol.

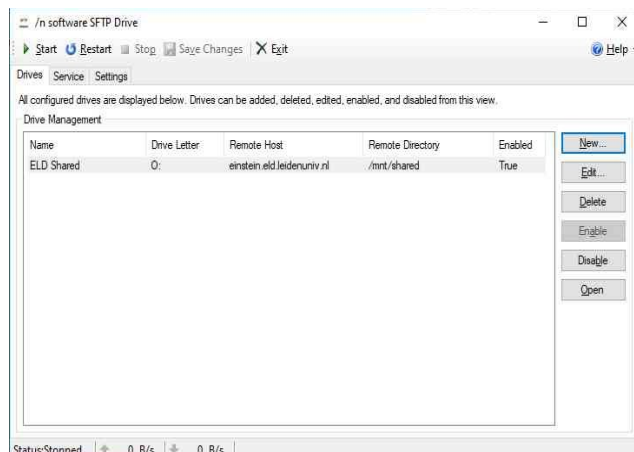
You must first download and install "SFTPDive, available here: <https://www.eld.leidenuniv.nl/ftp/sftpdive/> . After the installation finishes, run the SFTPDive program. In the window below, click "New" (button on the right).



In the next window displayed enter "Drive name", "Drive Letter", "Remote Host" exactly(!) as displayed below. Note that it's strongly recommended to use "O:" as drive letter (unless not available) since this gives optimal integration with ie. Altium. For "Remote Folder" select "Specified folder:" and enter "/mnt/shared" in the field below it. For "Username:." and "Password:." enter your ELD account information. Finally click "OK".



In the window below press the "Start"-button (left top).



That's it: The ELD Shared-folder (on Einstein) is now accessible from your local computer's O:-Drive.

Please note that after every restart of Windows you must (manually) (re)start the SFTPDive program and click on the "Start"-button.